



Rheology Solutions

Rheology Solutions is the sole Australian distributor of this product range and we welcome the opportunity of discussing your application requirements.

*We hope the information you are seeking is contained within this file.
If you have any questions, or require further information please contact us.
We look forward to being of further service.*

Regards from the Team at Rheology Solutions.

RHEOLOGY SOLUTIONS PTY LTD. ACN 082 479 632

HEAD OFFICE: 15-19 Hillside Street, Bacchus Marsh, Victoria 3340 Australia. PO Box 754, Bacchus Marsh, Victoria 3340 Australia.

Telephone: +61 3 5367 7477 **Facsimile:** +61 3 5367 6477 **Email:** info@rheologysolutions.com **Website:** www.rheologysolutions.com

When existing measuring mixers and extruders need to be upgraded with newer torque rheometer drives and software, the modular Thermo Scientific HAAKE Docking Station OS is the right accessory to use.

HAAKE PolyLab OS Docking Station

Mobile bench for measuring mixers and measuring extruders



Applications:

- Mobile bench for Rheocord mixer 600 and Rheocord mixer 3000
- Docking station for existing single-screw extruders
- Adapter bench for CTW 100 conical twin screw extruder
- Modular bench to integrate mixers and extruders of different brands



Protect your measuring procedures

If you use a torque rheometer like one shown to the left, you need to think about protecting your measuring procedures and upgrading your installation with the help of the Thermo Scientific HAAKE PolyLab OS Docking station.

The OS Docking Station is a mobile bench that is compatible with new and old measuring mixers and measuring extruders as far back as the '80s. New mixers and extruders may be similar in appearance but may not give identical test results to older models. The OS Docking Station can be calibrated to ensure that old

systems correlate with new ones.

New software increases productivity

When used with the PolyLab OS torque rheometer, the mobile docking station increases productivity right from the push of the start button. Existing work procedures are fully automated immediately.

PolySoft OS Windows software connects to your company's LAN network for remote supervision and service support. The software is compatible with Microsoft Office and enables you to import mixer data and graphs into PowerPoint presentations or to load data tables into Excel spreadsheets – even for older mixers (see table on back side).



Compatibility

The mobile OS Docking Station serves as a bench for existing measuring mixers and measuring extruders. Any system can be connected that can be accommodated by the two screws that secure the mixer/extruder.

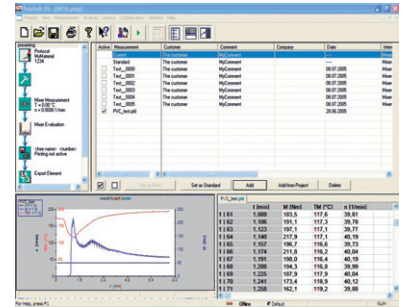
Torque adaptation to the PolyLab OS rheometer is accomplished via a special coupling specific to the mixer model (see table). The temperature controllers for up to four heating zones plus air cooling are already integrated into the docking station.



Docking Panel Connections

PolySoft OS Software

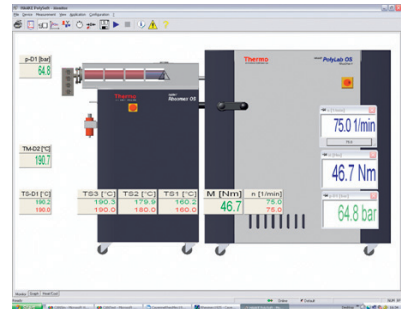
Up-to-date PolySoft OS 32-bit software runs under Windows XP with clipboard, long file names and multitasking support. Since PolyLab OS software uses the standardized CANopen system to connect peripheral devices, the items connected are automatically identified and graphically shown in the software. This feature together with the new Job protocol makes it easy to use this software suite.



Mixer Test

Accessories

The base unit PolyDrive OS controller uses the CANopen bus for communication and transporting measuring/control data, which requires CANopen-compatible pressure transducers and temperature sensors.



Configuration

Technical Specifications

Mobile OS Docking Station	567-2500
Dimensions (L x W x H)	40 x 50 x 103 cm
Weight	50 kg
Electrical power	from RheoDrive base unit
Heating zones	4 standard (more optional)
Electrical heating/ air cooling	3 sections
Maximum temperature	450 °C*
Temperature resolution	0,1 K
Maximum torque	300 Nm*
Maximum speed	200 min ⁻¹ *

* Can be limited by the mixer/extruder itself

Supported Mixer & Extruder	Year	Coupling
Rheomix 600 / 610 / 540	= 1990	557-1126
Rheomix 600 / 610 / 540	< 1990	557-1143
Rheomix 3000 / 3010	= 1990	557-1125
Rheomix 3000 / 3010	< 1990	557-1143
Rheomex 102 / 104 / 252 / 302	= 1990	557-1125
Rheomex 102 / 104 / 252 / 302	< 1990	557-1128
Conical twin-screw extruder TW100	< 1990	557-1141
Other models	- - -	on request

Thermo Fisher Scientific Process Instruments

International/Germany
Dieselstr. 4
76227 Karlsruhe
Tel. +49 (0) 721 4 09 44 44
info.mc.de@thermofisher.com
www.thermo.com/mc

Benelux
Tel. +31 (0) 76 5 79 55 55
info.mc.nl@thermofisher.com
China
Tel. +86 (21) 68 65 45 88
info.china@thermofisher.com

France
Tel. +33 (0) 1 60 92 48 00
info.mc.fr@thermofisher.com
India
Tel. +91 (22) 27 78 11 01
info.pid.in@thermofisher.com

United Kingdom
Tel. +44 (0) 1785 81 36 48
info.mc.uk@thermofisher.com
USA
Tel. 603 436 9444
info.mc.us@thermofisher.com